



Radio Control Club of Detroit

www.rccd.org/WOW.htm

Watts over Wetzel

(12th Annual RCCD Electric Fly-In)

Date: May 20th & 21st. 2017

Times: Pilots' Meeting at 8:45 am
Flying Starts at 9:00 am

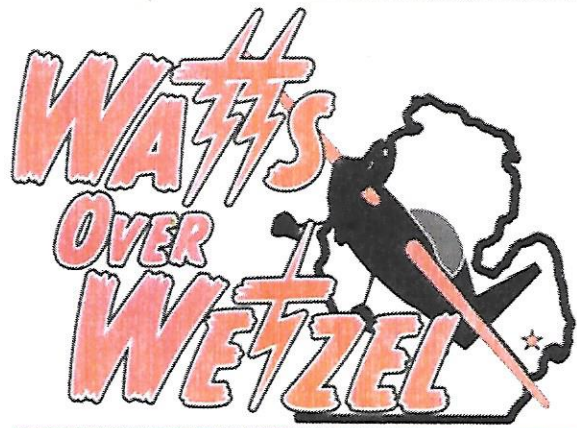
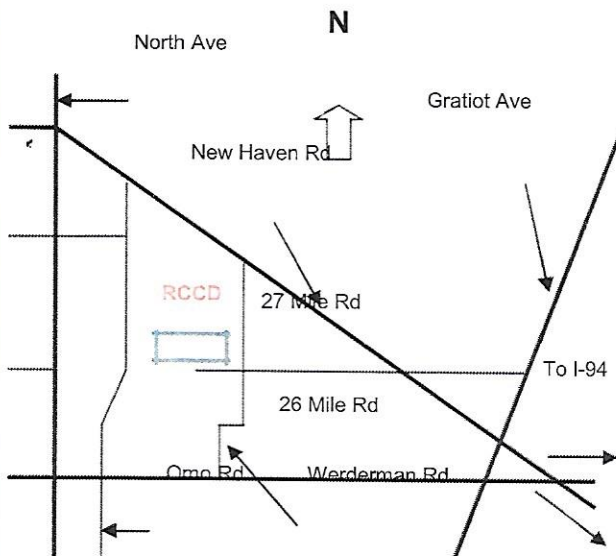
Location: RCCD Flying Field in Wetzel
State Park (see map below)

Format: Fly-In: **Electrics only, any size**
(110V power available for charging)

Landing Fee: \$10.00 Daily or \$15.00 for both

Event Updates at: www.rccd.org/WOW.htm

Ample parking, Food & Refreshments, Raffles,
Limited bleacher seating available. Sun
Shades Suggested, Vendors on site.



CO CD'S

Phil Laperriere -586-228-9583

John McCormick - 586-596-8403

If you're into electric flying, this is the event to be at!
All your friends and fellow electric flyers will be
there, **and so should you.**

RCCD's Annual Electric Fly-In has grown leaps and
bounds over the years boasting a large number of
pilots, an awesome flying site, great food, 50/50 raffles,
plane raffles, vendors and a ton of prizes.

Our Contest Directors, along with all RCCD members
invite you to a day of fun, filled with electric flying,
friends, and plenty of prizes to take home!



Follow and Like us on Facebook:
www.facebook.com/WattsOverWetzel

Pilots Prizes #1: All registered pilots will receive one ticket,
good for a chance at one prize each. You **do not** have to be present
to win, but must make arrangements to pickup your prize.

Michigan Recreation Pass required for Park access.

AMA Sanction #: 527